

unum-X ST - DT universal

Universal Indoor Motion detector

Description and functionalities

unum-X ST universal indoor motion detectors with PIR and unum-X DT X5/X8 dual technology with PIR and microwave detection, are professional detectors that guarantee the highest degree of reliability, without incurring any false alarms; they implement Tough Mod2™ technology, in gold plated, which offers high resistance to heat and humidity and extends the life of the detector.

They are equipped with a mechanism that allows the Fresnel lens to be rotated 180° to obtain two different detection areas:

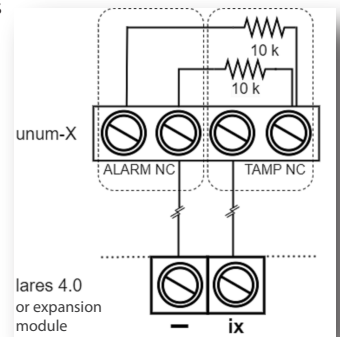
- **WIDE** (default) = 12 m detection area and 85° coverage area on horizontal plan (used as volumetric detector)
- **NARROW** = 18 m detection area and 5° coverage area on horizontal plan (used as curtain detector).



KS15101001.300 unum-X ST - Grade 2
 KS15102001.300 unum-X DT X5 - Grade 2
 KS15102001.301 unum-X DT X8 - Grade 2

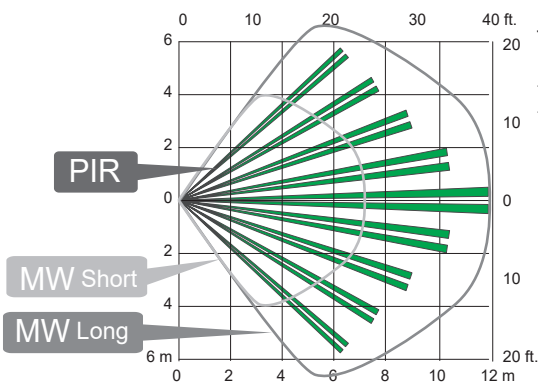
Connection to the lares 4.0 Ksenia control panel is realized by connecting the unum-X alarm and tamper outputs to input terminals of the panel or of any expansion module as NC or to a single input by inserting the balancing resistors, as shown in the figure, and programming the DOUBLE PARALLEL BALANCING.

Once associated with the relative "Zones" they can be managed by User and Installer Ksenia Apps.

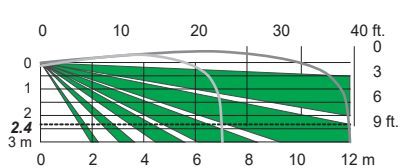


The jumpers inside the main unit of the device allow the setting of Fresnel lens, PIR sensitivity, Microwave sensitivity and LED indicator; for unum-X DT X5/X8 detectors it is also possible to manage the LED indicator remotely (ON/OFF).

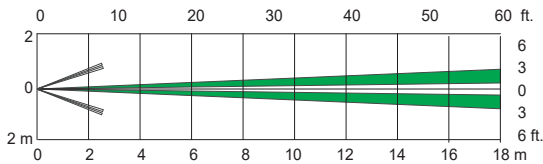
Wide - Top view



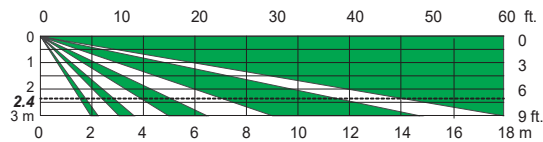
Wide - Side view



Narrow - Top view



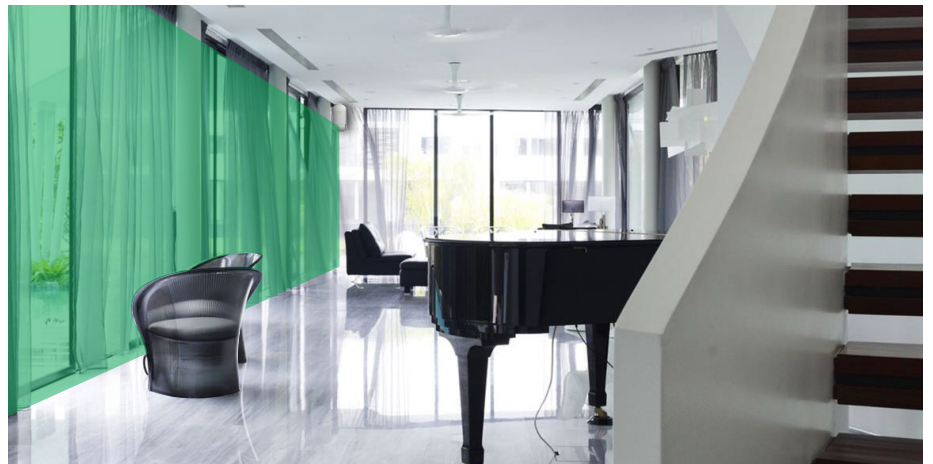
Narrow - Side view



used as volumetric detector



used as curtain detector





KS15101001.300 unum-X ST - Grade 2
 KS15102001.300 unum-X DT X5 - Grade 2
 KS15102001.301 unum-X DT X8 - Grade 2

ACCESSORIES
 • KS15900006.001
 Bracket with tamper
 for wall and
 ceiling mounting.



COMPLIANCE
 • Europe - CE, RoHS



CERTIFICATIONS

KS15101001.300 - unum-X ST Grade 2

(*EN 50131-2-2:2017 Security Grade 2, Environmental Class II
 (*SBSC Iarm class 2, miljö klass II, SSF 1014
 (Optional bracket is NOT covered)
 (*INCERT T031:2017+A1:2018+A2:2022
 note(*): NARROW setting is not certified. PET immunity is
 not certified

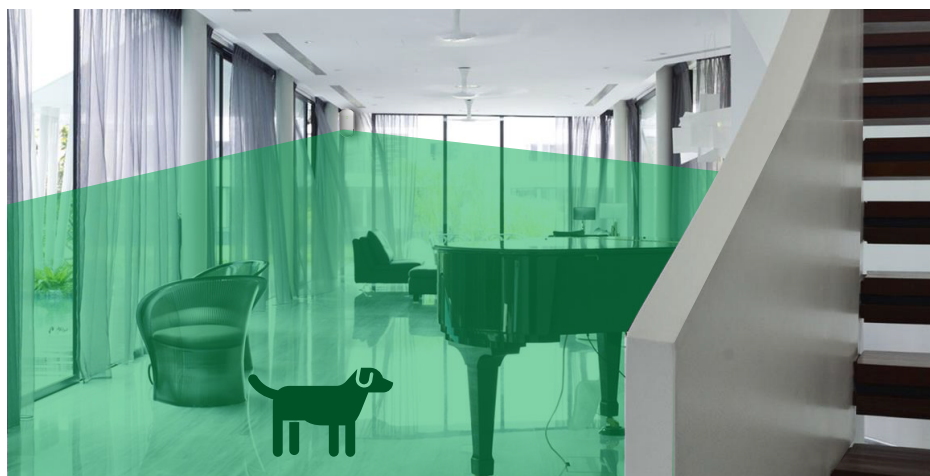
KS15102001.300 - unum-X DT X5 Grade 2

(*EN 50131-2-4:2020 Security Grade 2, Environmental Class II
 RE Directive 2014/53/EU
 (*SBSC Iarm class 2, miljö klass II, SSF 1014
 (Optional bracket is NOT covered)
 note(*): NARROW setting is not certified. PET immunity is
 not certified

KS15102001.301 - unum-X DT X8 Grade 2

(*EN 50131-2-4:2020 Security Grade 2, Environmental Class II
 RE Directive 2014/53/EU
 UK Radio Equipment Regulations 2017
 (*INCERT T031:2017+A1:2018+A2:2022
 note(*): NARROW setting is not certified. PET immunity is
 not certified

PET IMMUNITY - Pet immunity requires the setting of the PIR Sensitivity jumper to the "LOW" level to avoid false alarms.



Technical data

Power input	9.5 - 16 VDC	
Consumption	8 mA (normal) /11 mA (max.) at 12 VDC	(unum-X ST)
	11 mA (normal) /14 mA (max.) at 12 VDC	(unum-X DT X5/X8)
Relay output	Alarm NC 24 VDC 0.1 A max. Cover tamper NC 24 VDC 0.1 A max.	
Remote LED	Open terminal = OFF / 0 V = ON	(unum-X DT X5/X8)
Detection method	Passive infrared (unum-X ST) - Passive infrared and MW (unum-X DT X5/X8)	
PIR Sensitivity	1.6°C at 0.6 m/s (at 2.4 m mounting height)	
Rotating lens	Fresnel 180° - Rotate for Wide or Narrow coverage	
Coverage	Wide: 12 m 85° - Narrow: 18 m 5° (No MW detection with Narrow lens)	
Detection zones	Wide: 76 zones - Narrow: 12 zones	
Mounting height	from 2 to 3 m (2.4 m recommended)	
Detection speed	0.3 - 2.0 m/s	
Warm-up period	60 s approximately (LED blinks)	
MW frequency unum-X DT	X5: 10.525 GHz	X8: 10.587 GHz
Pet immunity	Yes	
LED indicator	Green: stand-by OFF - Alarm/tamper ON	
Operating temperature	[-10°C +40°C]	
Temperature compensation	Digital (SMDA)	
Humidity	95% max	
Dimensions	129.2 x 61.5 x 50.9 mm (HxWxD)	
Weight	90g (unum-X ST)	105g (unum-X DT X5/X8)
Mounting	Indoor: wall or corner (with bracket: wall or ceiling)	

unum-X motion detectors are covered by 5-years warranty.



Quantity data

lares 4.0 models	wls 96	16	40	40 wls	140 wls	644 wls
Maximum number of zones	40	16	40	40	144	644

Technical specifications, appearance, functionality and other product characteristics may change without notice.